

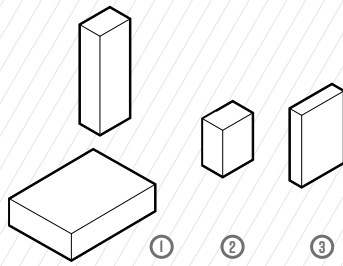
AGGREGATE

GRANT MATTINGLY

TO CREATE A COLLECTION OF PROGRAMMATIC MASSES WHICH HOUSE A DIVERSE SET OF PROGRAMS, AND CREATE AN ACTIVE ENVIRONMENT IN BETWEEN:

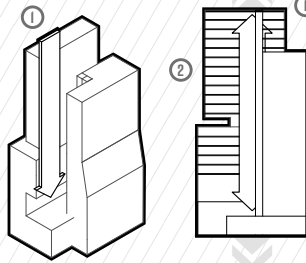
- ① *PERFORATED METAL SKIN CREATES DISTINCT MASSES, EMPHASIZING THE AGGREGATION OF VOLUMES AS FORM*
- ② *EACH VOLUME IS STRUCTURED SEPERATELY, AND ALLOWS EACH TO HANG OFF THE CORES IN VARYING DIRECTIONS, INDEPENDENT OF THE OTHER MASSES*
- ③ *CIRCULATION IS CENTERED AROUND THREE HUBS, EACH AT A BREAK WITHIN THE MASSES, AND ACCESSED BY AN EXPRESS ELEVATOR. THIS STREAMLINES VERTICAL CIRCULATION AND CREATES MIXING ZONES FOR OCCUPANTS OF DIFFERENT PROGRAMS*

MASSES



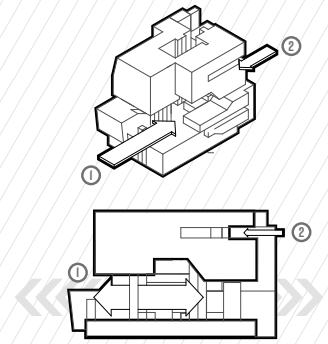
- ① OFFICE FLOORS RANGE FROM LARGE AND FLAT TO SMALL AND VERTICAL, CREATING DIFFERENT ENVIRONMENTS TO ATTRACT A VARIETY OF COMPANIES
- ② HOTEL BLOCKS ARE THICKER, DOUBLE LOADED CORRIDORS TO MAXIMIZE ROOM COUNT
- ③ HOUSING BLOCKS ARE SLIVERS THAT EXPRESS THE HORIZONTAL CIRCULATION ON THE EXTERIOR, MAXIMIZING NATURAL LIGHT AND VENTILATION

VERTICAL CUTS



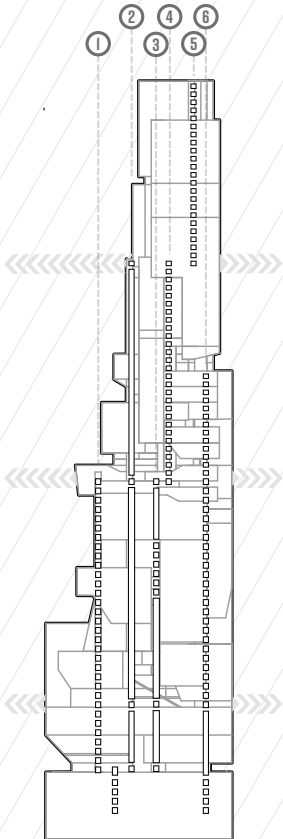
- ① ALLOWS FOR VERTICAL CIRCULATION TO BE EXPRESSED AND ADD TO THE ACTIVITY OF THE SPACE
- ② HORIZONTAL CIRCULATION PULLED OUT INTO OPEN AIR ATRIUM TO CREATE VISUAL CONNECTION BETWEEN FLOORS AND ALLOW CROSS VENTILATION FOR RESIDENTIAL UNITS

HORIZONTAL CUTS



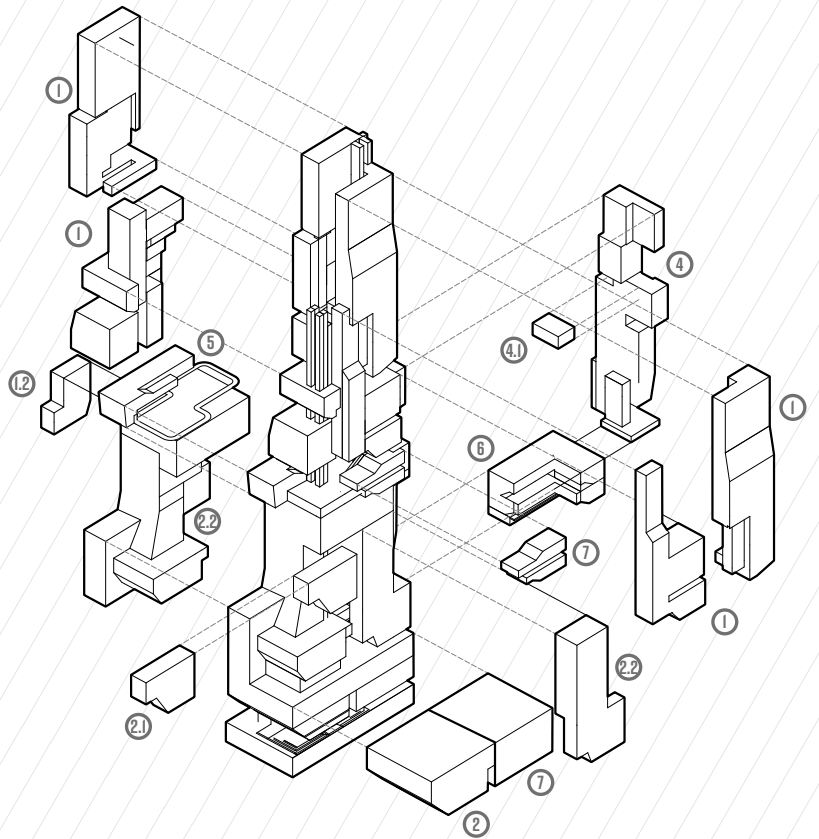
- ① TRANSFER FLOORS BETWEEN MASSES DRAW INHABITANTS FROM DIFFERENT PROGRAMS TO SHARE THE PUBLIC PROGRAM CREATED AROUND CIRCULATION
- ② CUTS INTO MASSES CREATE DRAW INHABITANTS OUT INTO SHARED OPEN SPACE, AND SERVE TO BREAK UP THE REPETITION OF THE FLOORS BOTH INTERNALLY AND EXTERNALLY

ELEVATORS

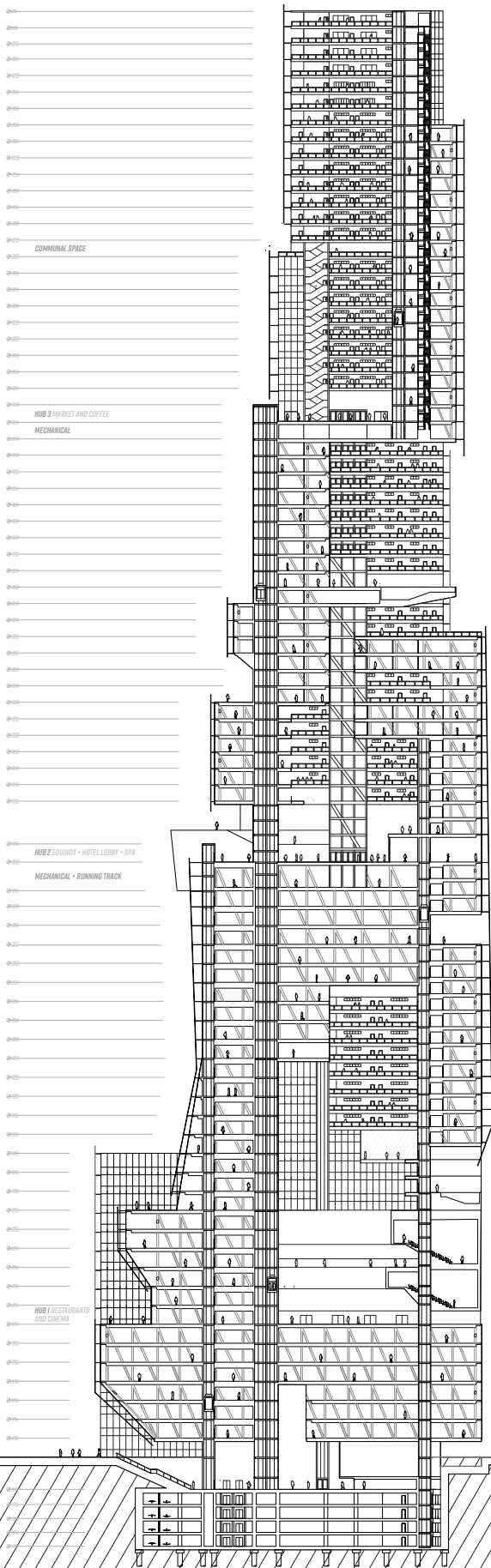


- ① OFFICE
- ② EXPRESS
- ③ TRANSITIONAL HOUSING
- ④ HOUSING SECTION I
- ⑤ HOUSING SECTION 2

EXPLODED PROGRAM

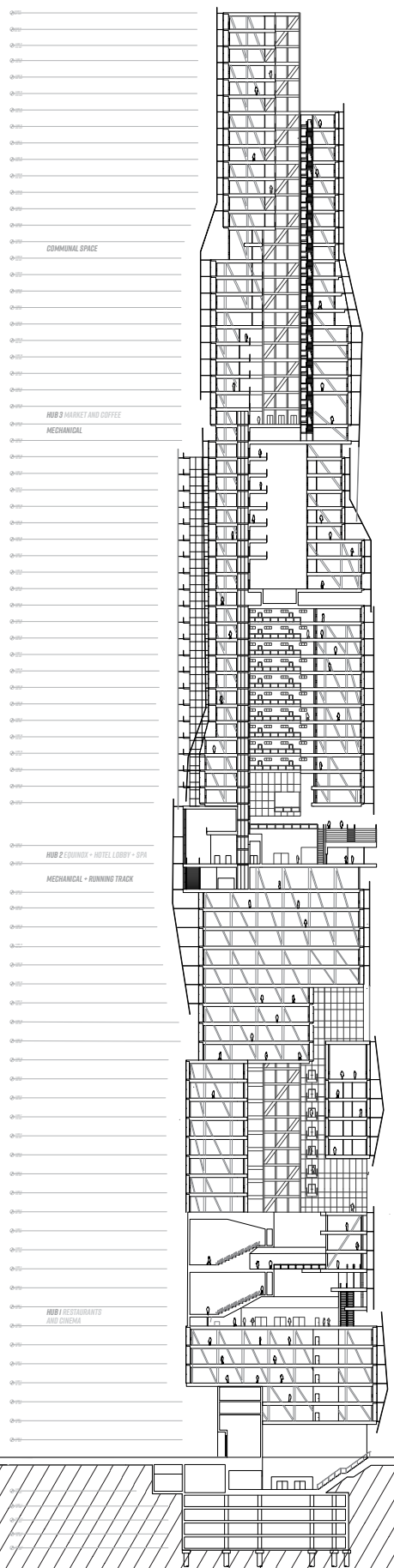


- ① HOUSING
- ①.2 TRANSITIONAL FAMILY HOUSING
- ② OFFICE
- ②.1 CONFERENCE CENTER
- ②.2 WE WORK OFFICES
- ④ HOTEL
- ④.1 HOTEL LOBBY
- ⑤ EQUINOX
- ⑥ THEATER
- ⑦ RETAIL



01 LONGITUDINAL SECTION

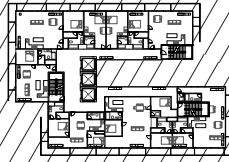
NTS



02 TRANSVERSE SECTION

NTS

72 UPPER HOUSING ELEVATOR: 102/101

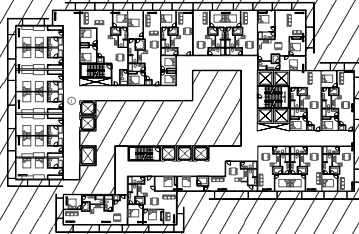


20 NETWORK OFFICES ELEVATOR: 05/01



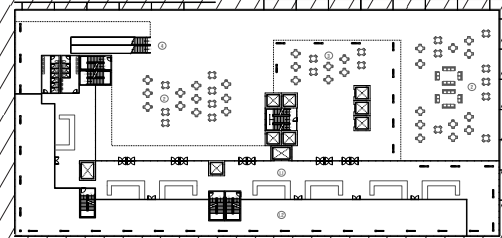
- 1 HOTEL ROOMS
- 2 HOTEL SUITES
- 3 HOTEL CONFERENCE CENTER
- 4 HOTEL CONFERENCE CENTER
- 5 HOTEL CONFERENCE CENTER
- 6 HOTEL CONFERENCE CENTER
- 7 HOTEL CONFERENCE CENTER
- 8 HOTEL CONFERENCE CENTER
- 9 HOTEL CONFERENCE CENTER
- 10 HOTEL CONFERENCE CENTER
- 11 HOTEL CONFERENCE CENTER
- 12 HOTEL CONFERENCE CENTER
- 13 HOTEL CONFERENCE CENTER
- 14 HOTEL CONFERENCE CENTER
- 15 HOTEL CONFERENCE CENTER
- 16 HOTEL CONFERENCE CENTER
- 17 HOTEL CONFERENCE CENTER
- 18 HOTEL CONFERENCE CENTER
- 19 HOTEL CONFERENCE CENTER
- 20 HOTEL CONFERENCE CENTER

39 MIDDLE HOUSING ELEVATOR: 01/01



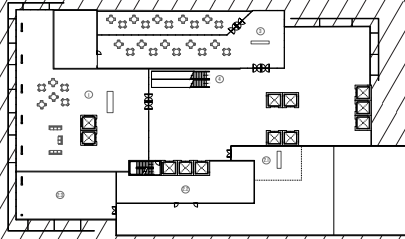
- 1 HOTEL
- 2 HOUSING

07 HUB 1 RESTAURANTS AND CINEMA ELEVATOR: 01/01



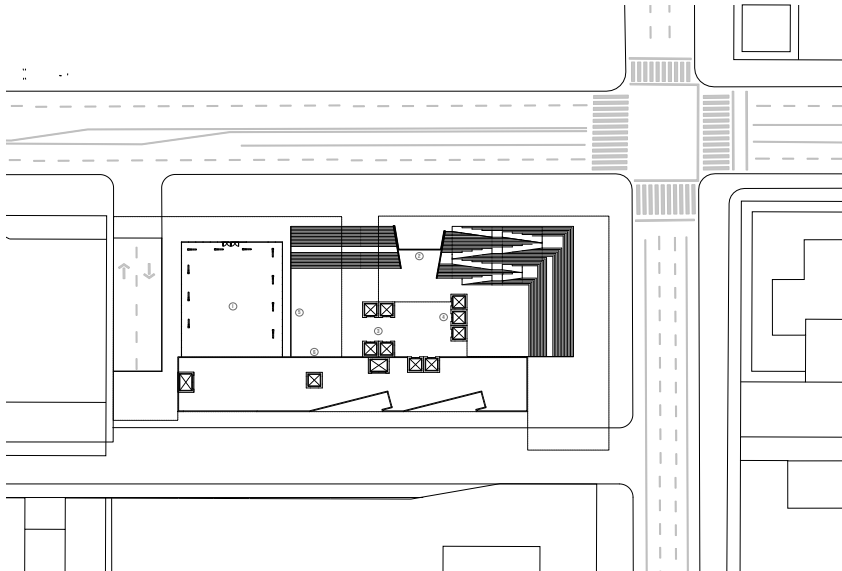
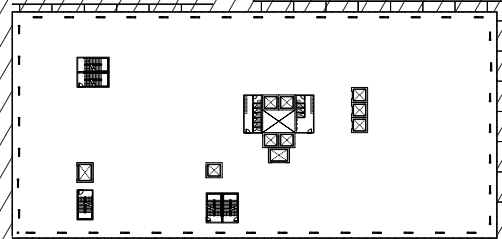
- 1 RESTAURANT
- 2 CINEMA
- 3 OUTDOOR SEATING
- 4 CONFERENCE CENTER
- 5 RESEARCH AND INNOVATION CENTER

33 HUB 2 FOUNDATION AND HOTEL LOBBY ELEVATOR: 01/01



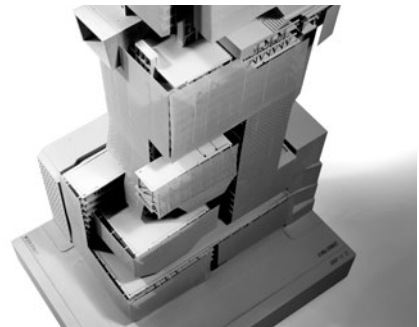
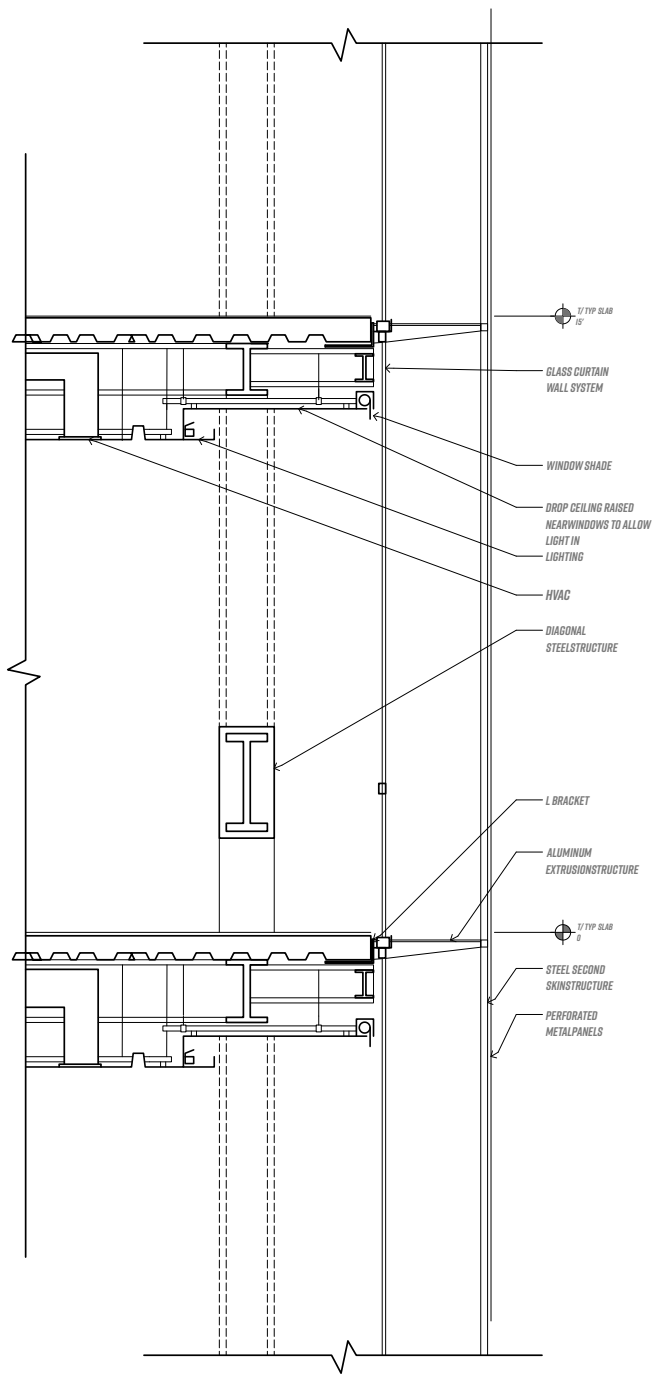
- 1 HOTEL LOBBY
- 2 FOUNDATION
- 3 FOUNDATION LOWER LEVEL
- 4 FOUNDATION LOWER LEVEL
- 5 FOUNDATION LOWER LEVEL
- 6 FOUNDATION LOWER LEVEL
- 7 FOUNDATION LOWER LEVEL
- 8 FOUNDATION LOWER LEVEL
- 9 FOUNDATION LOWER LEVEL
- 10 FOUNDATION LOWER LEVEL
- 11 FOUNDATION LOWER LEVEL
- 12 FOUNDATION LOWER LEVEL
- 13 FOUNDATION LOWER LEVEL
- 14 FOUNDATION LOWER LEVEL
- 15 FOUNDATION LOWER LEVEL
- 16 FOUNDATION LOWER LEVEL
- 17 FOUNDATION LOWER LEVEL
- 18 FOUNDATION LOWER LEVEL
- 19 FOUNDATION LOWER LEVEL
- 20 FOUNDATION LOWER LEVEL

03 OFFICE ELEVATOR: 01/01



01 GROUND ELEVATOR: 0 FEET

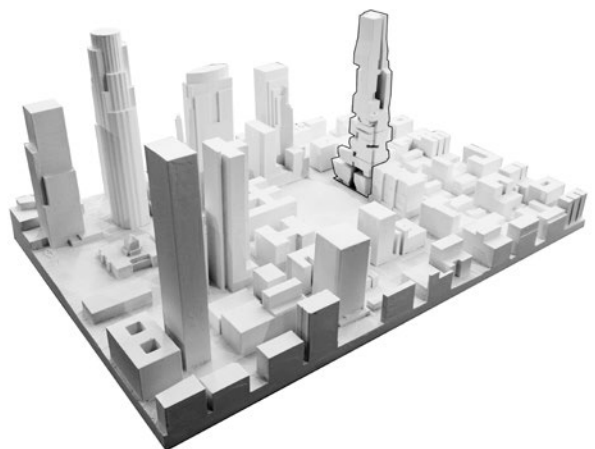
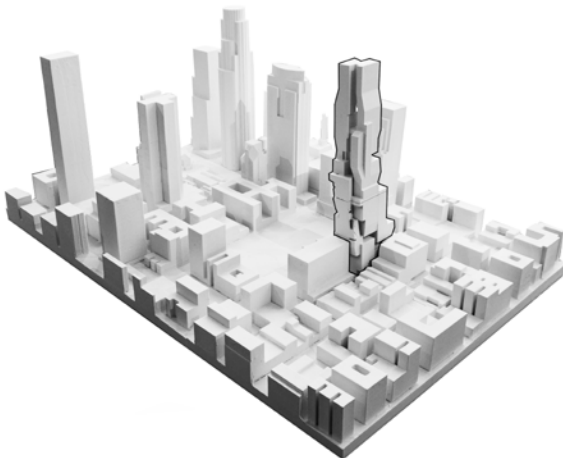
- 1 METAL
- 2 METRO ENTRANCE
- 3 EXPRESS ELEVATORS
- 4 OFFICE ELEVATORS
- 5 MAKE ROOM AND BIKE STORAGE (LOWER LEVEL)
- 6 TRANSITIONAL HOUSING OFFICE (LOWER LEVEL)
- 7 TRUCK LOADING

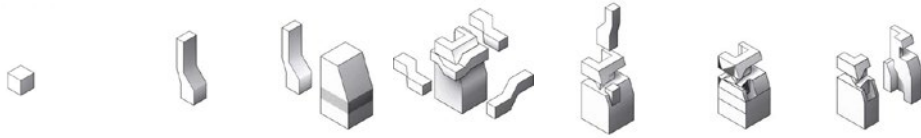


56

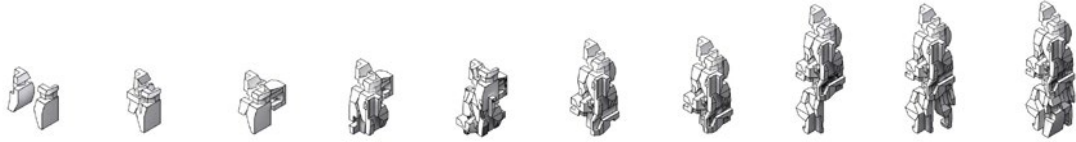
TYP. WALL SECTION

ELEVATION: 609 FEET





FRAGMENT GENERATION



MASS GENERATION



01 VERTICAL SECTION



02 VERTICAL SECTION



03 HORIZONTAL SECTION

