

grant mattingly

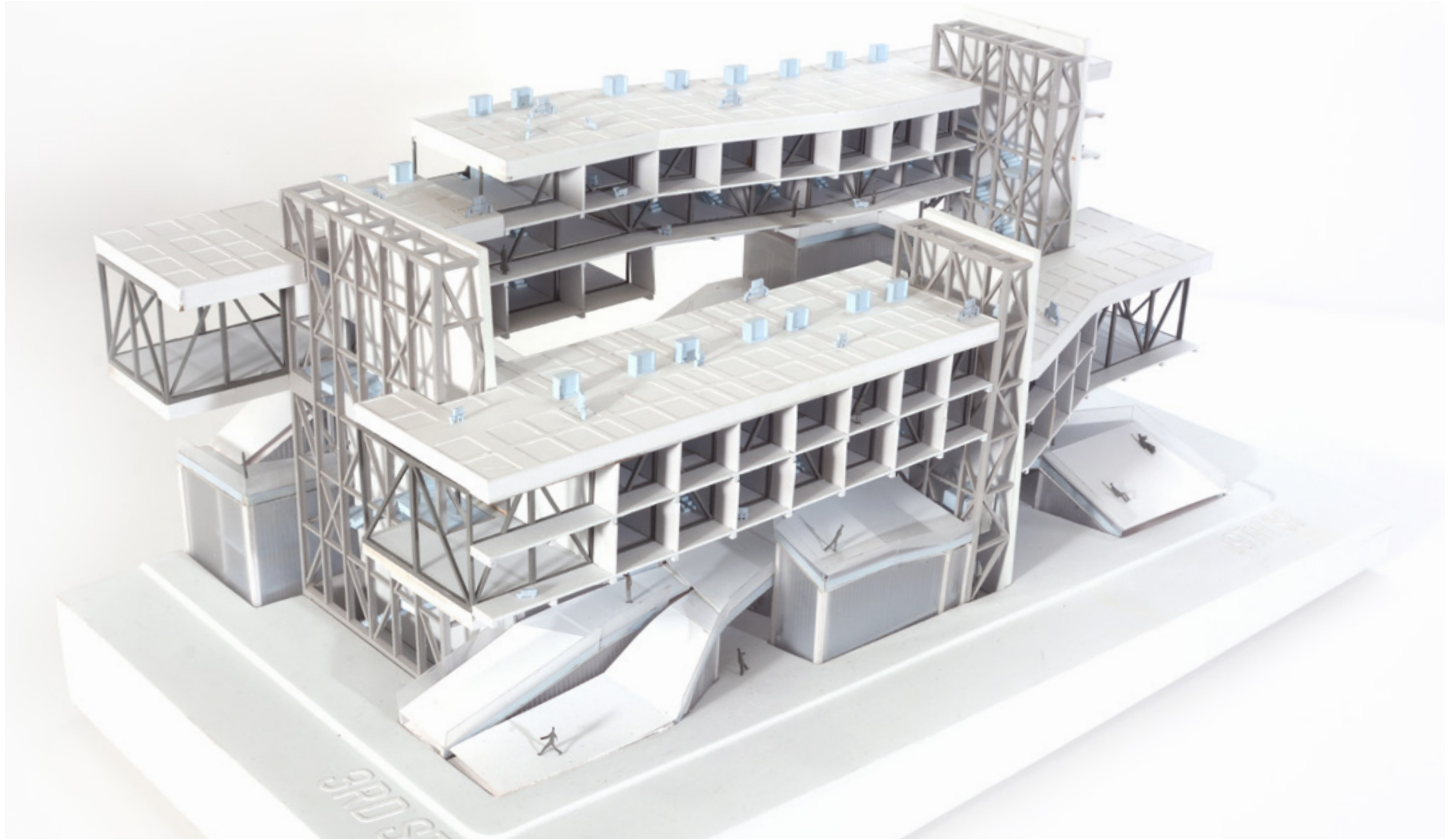
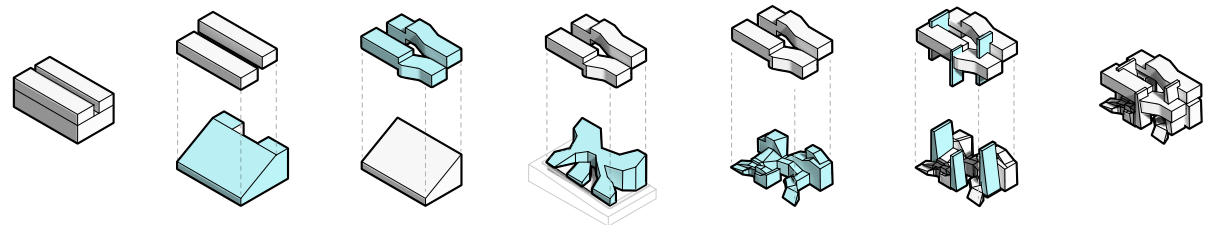
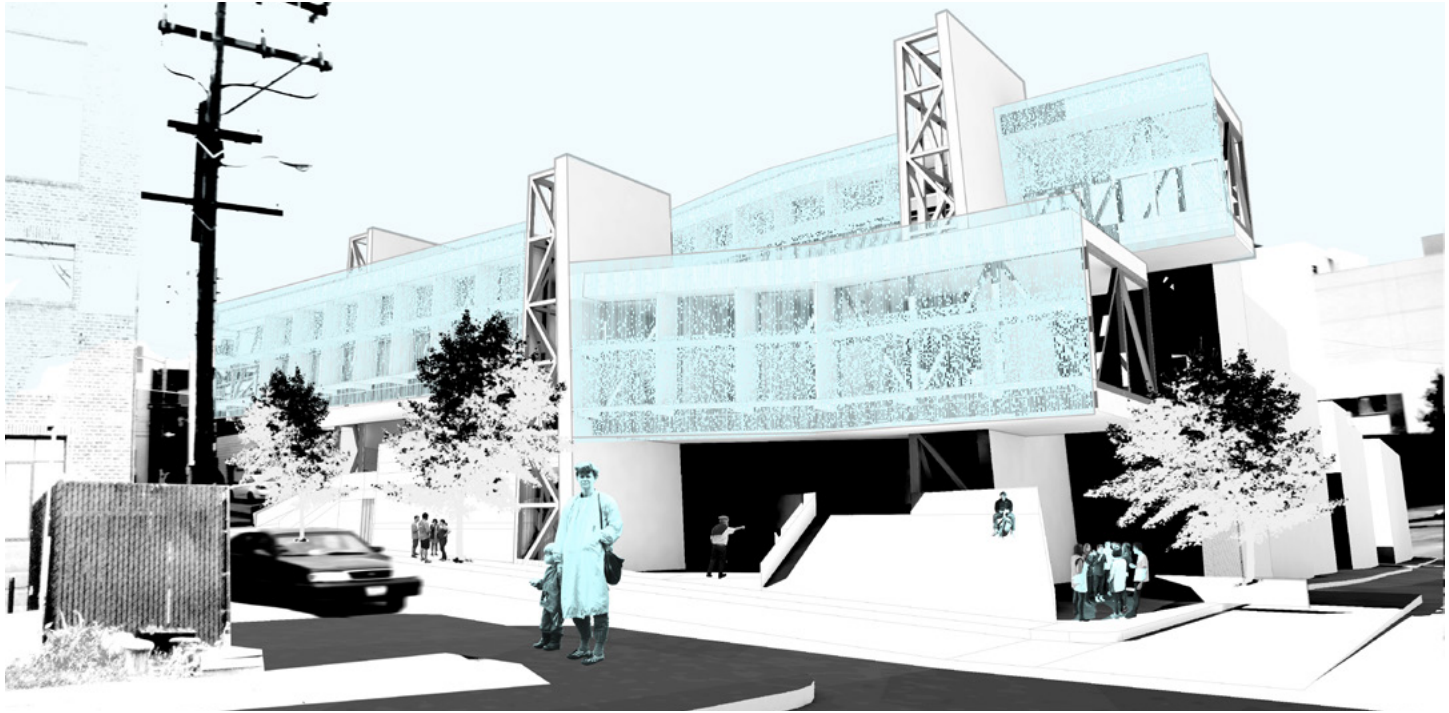
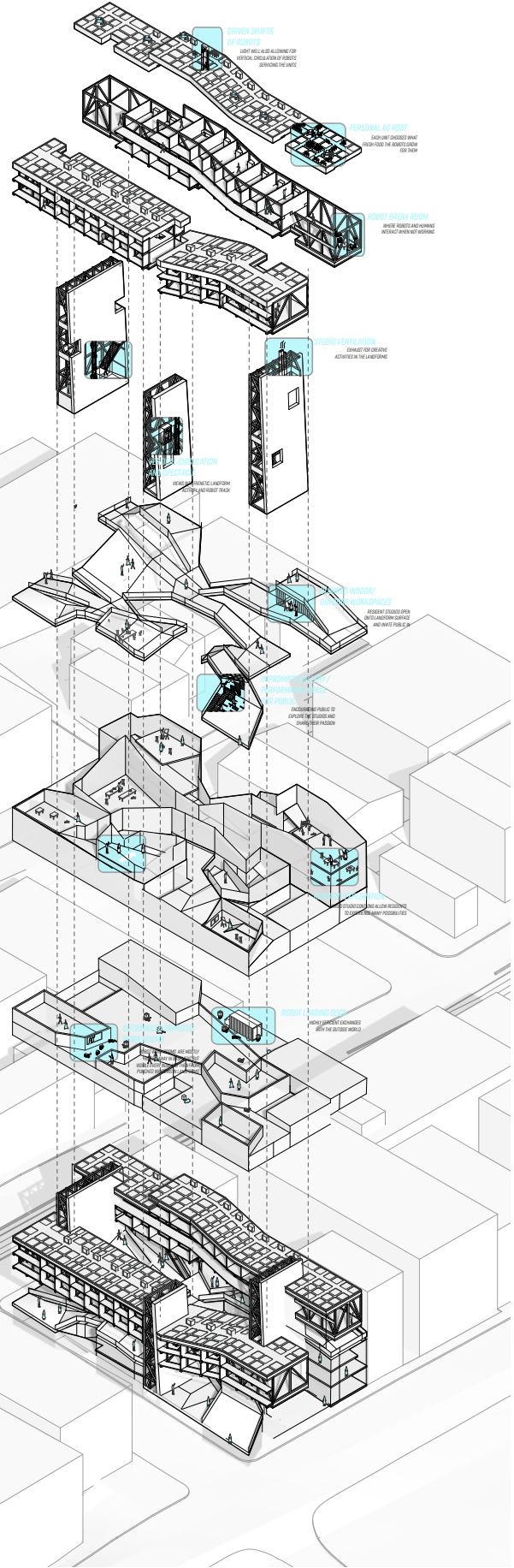
design portfolio

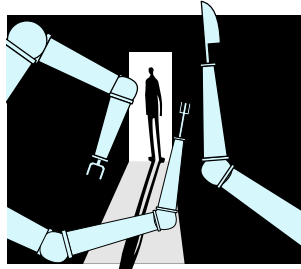


01 soft robots a new machine for living

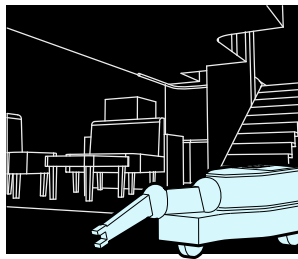
spring year 3 // studio ponitz // with celia chaussabel

We looked towards the future of automation and how it is removing much of the physical labor from human lives. But instead of applying this technology to an industrial setting, we studied how it could drastically change domestic life. This mixed-use building of the future includes both living spaces and makers spaces. The living space is raised above ground level, and is neat and orderly, allowing for robots to efficiently circulate to each apartment, and take care of all domestic chores. This removal of labor in the home creates more free time for the residents, and allows them to explore the ground floor, which is tuned for activities that are uniquely human. It is a messy, creative space that urges exploration in its circulation, impromptu meetings and performances both inside and outside the masses, and chance encounters between both the residents and the public. The towers connect the grounded, concrete spaces of the bottom with the light steel housing above, and allow people moving vertically upward to view into multiple studio spaces as a way to draw them out of the routine path home, and entice them to make use of their newfound free time.

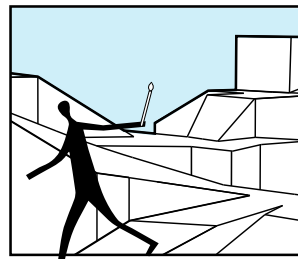




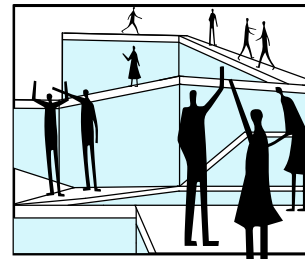
AUTOMATION ISN'T SOMETHING TO BE AFRAID OF



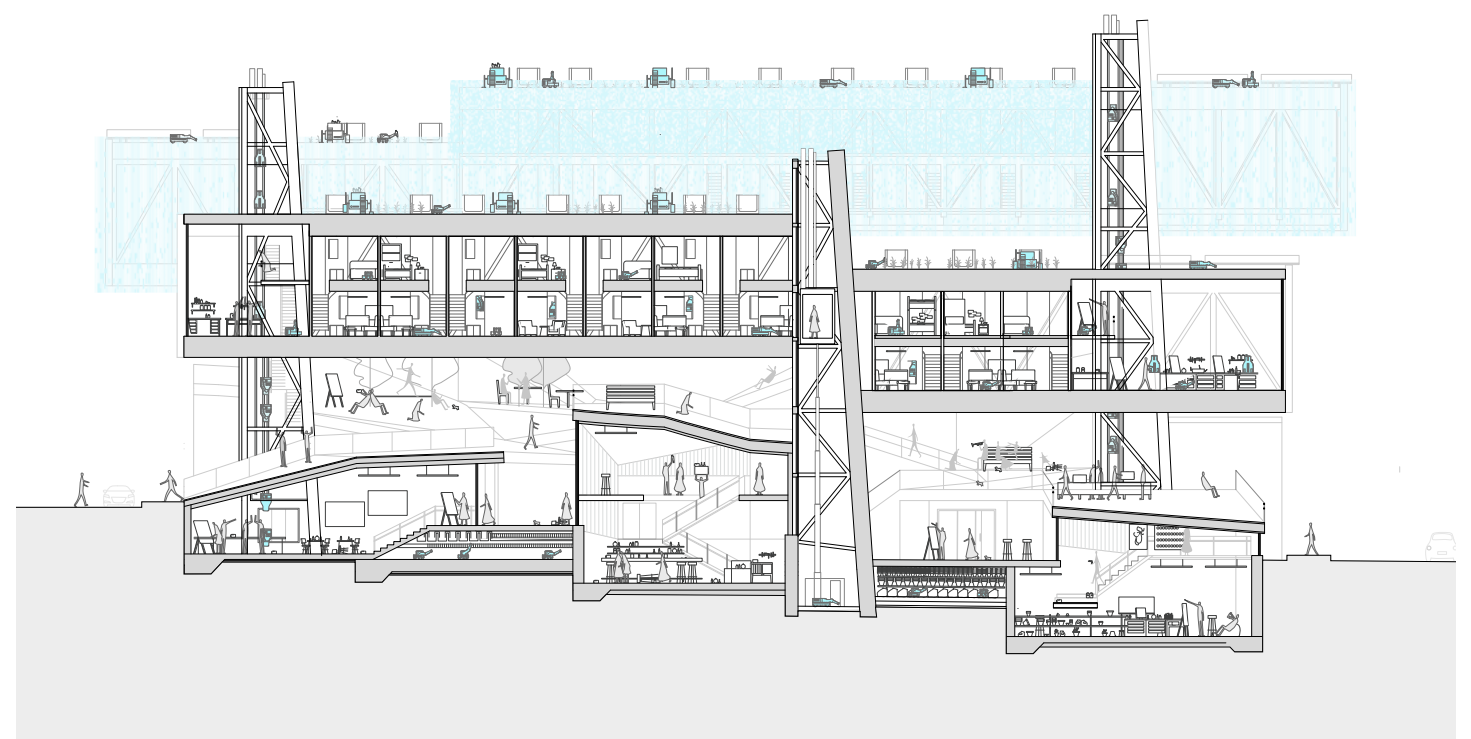
LET ROBOTS DO THE DOMESTIC WORK



EXPLORE YOUR PASSIONS!



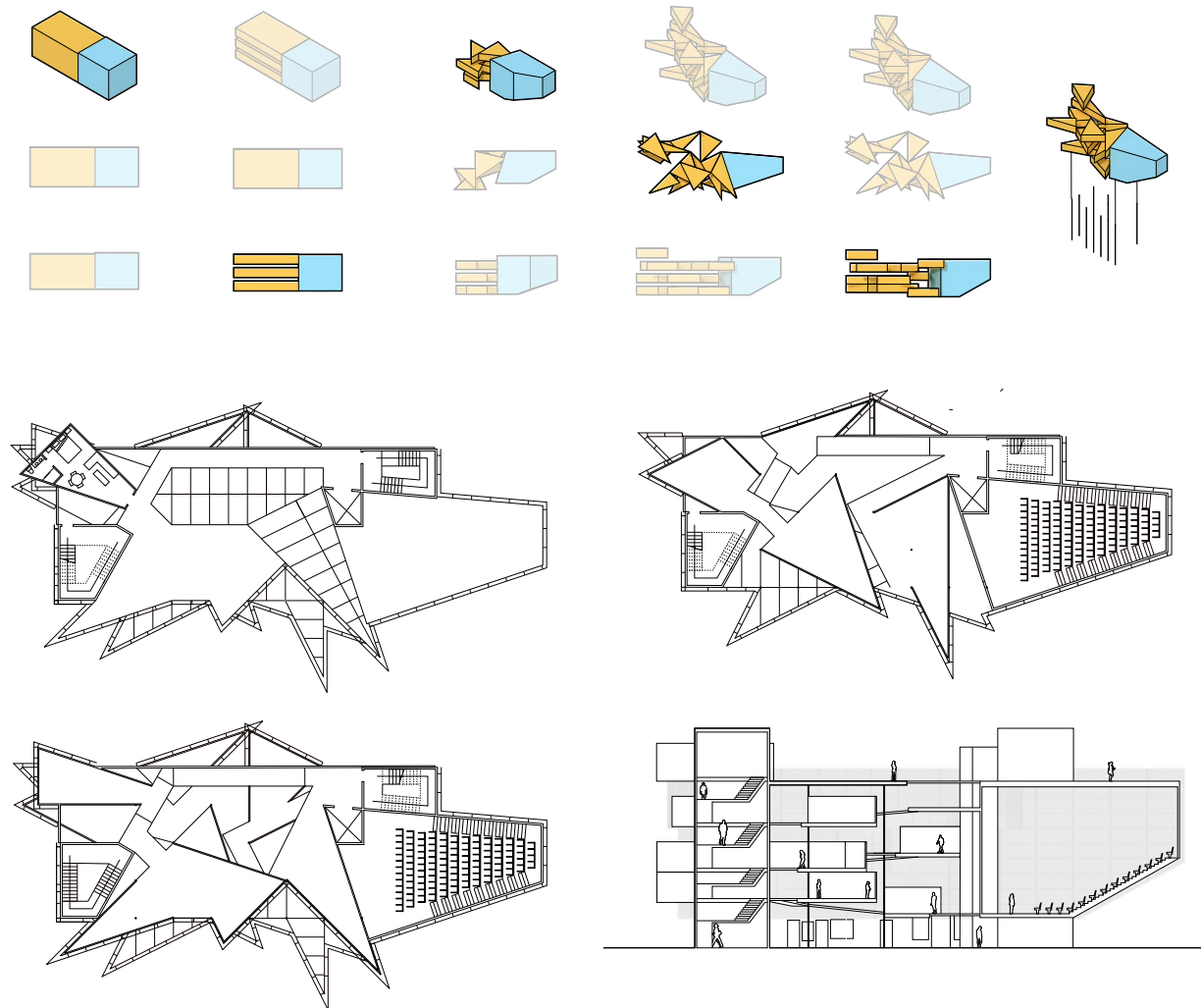
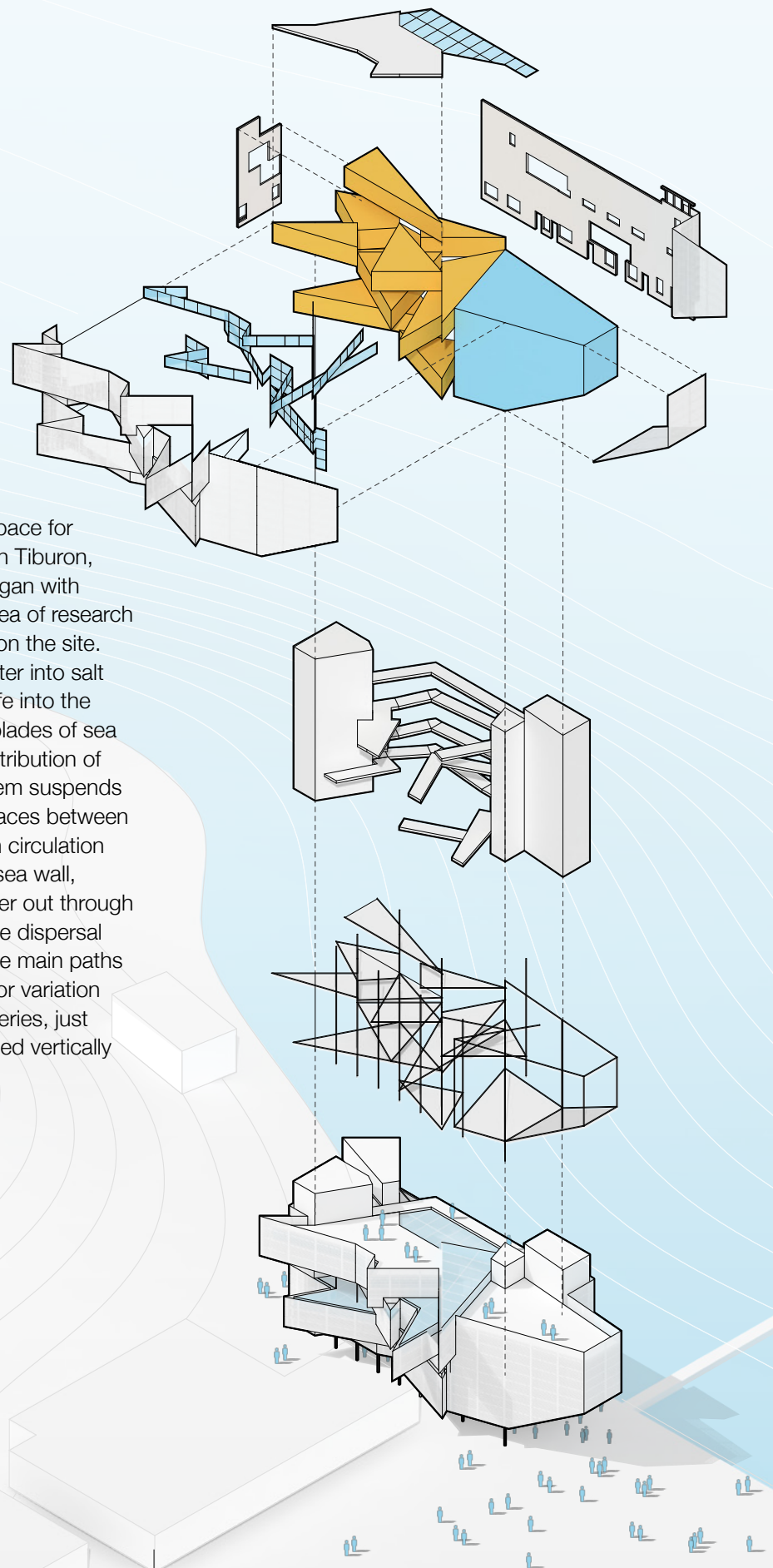
SHARE WITH OTHERS!



02 tides through salt marshes

fall year 3 // studio fowler

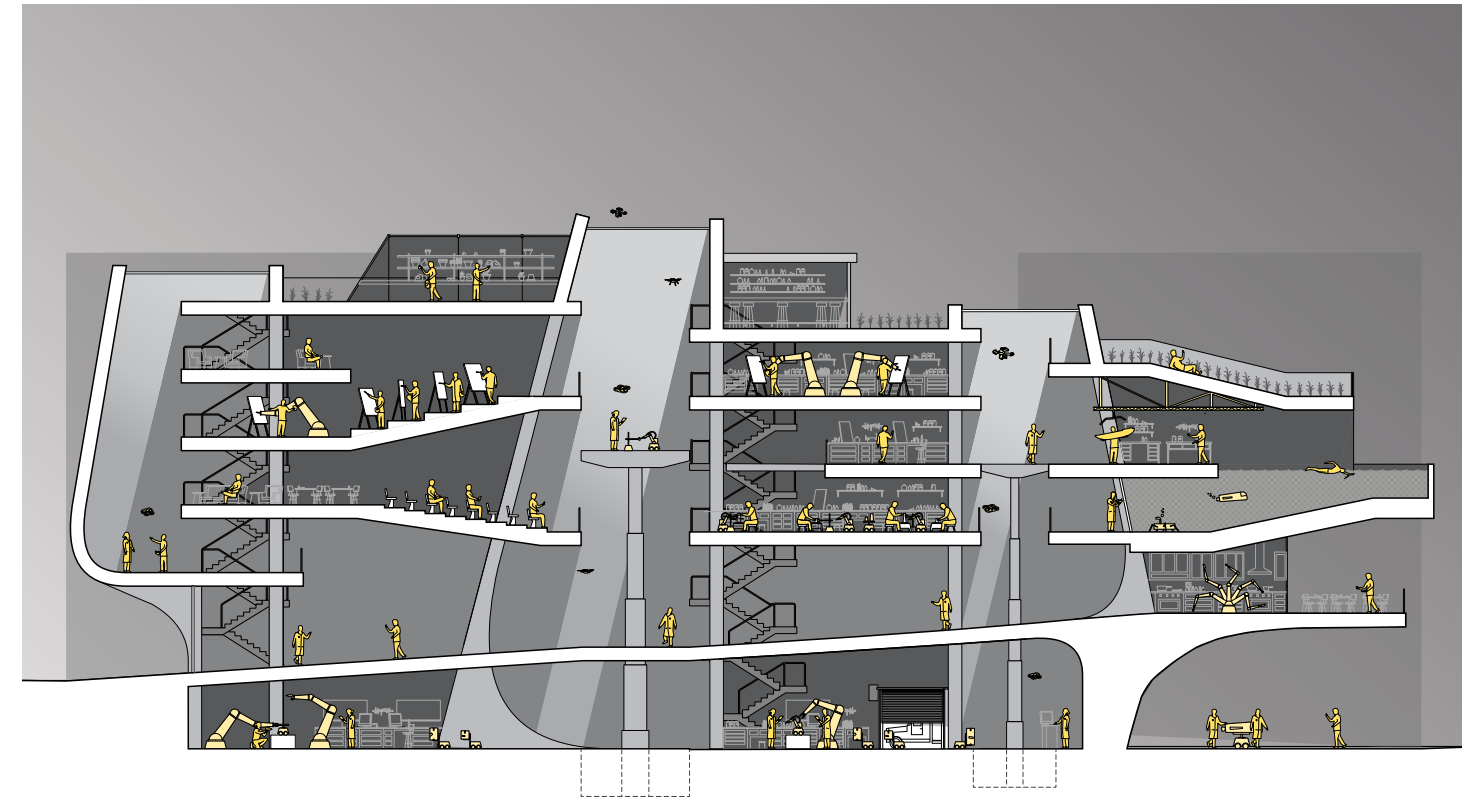
As a theater and gallery space for the CSU research facility in Tiburon, California, the concept began with examining marshes, an area of research already being conducted on the site. As the tides move sea water into salt marshes, they distribute life into the vertical spaces between blades of sea grass. To replicate this distribution of space, the structural system suspends the theater and gallery spaces between its vertical members. Main circulation paths are oriented to the sea wall, which allows visitors to filter out through the galleries, mimicking the dispersal of water in marshes. These main paths are also ramps, allowing for variation in heights of the open galleries, just as life is unevenly distributed vertically throughout the marsh.



03 CO/EV labs a habitat for co evolution

winter year 3 // studio ponitz

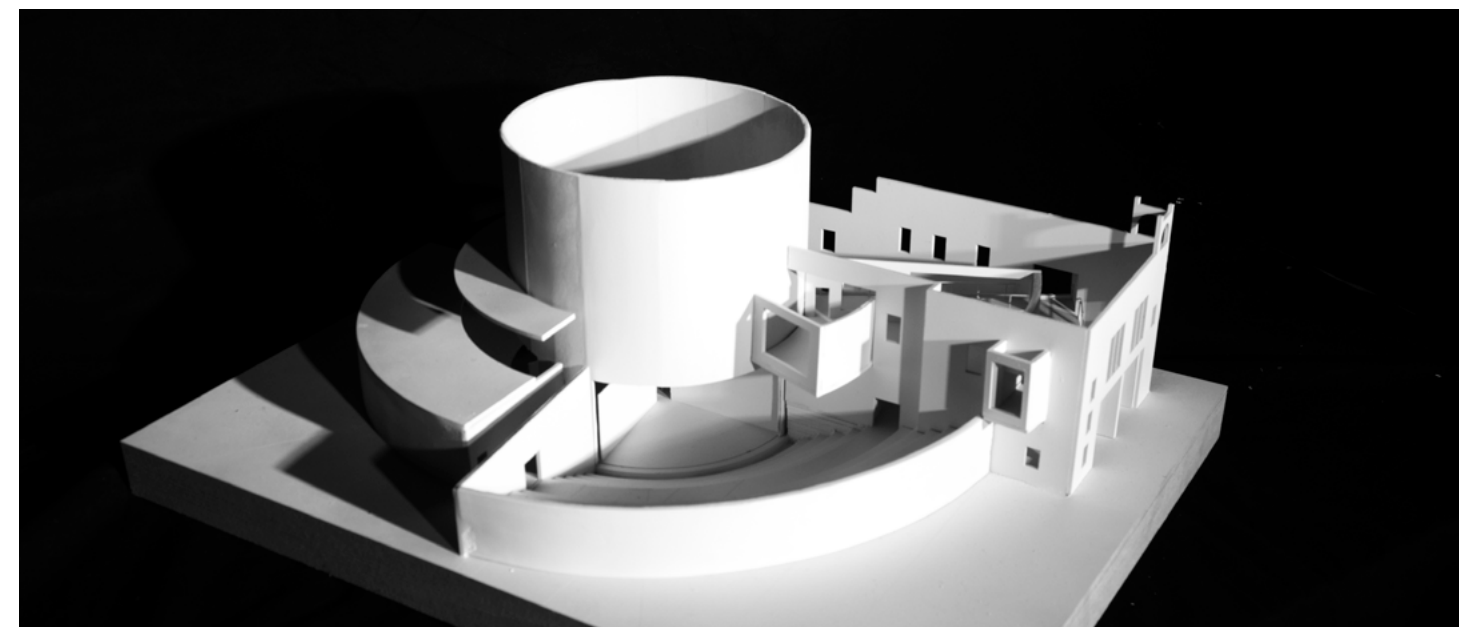
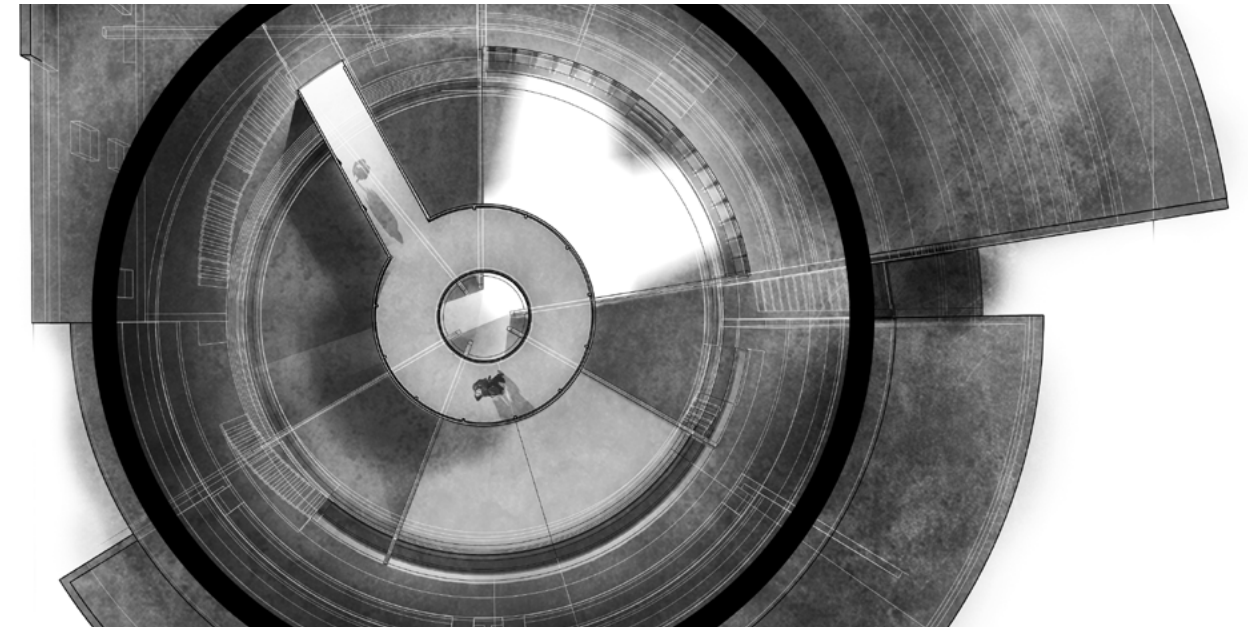
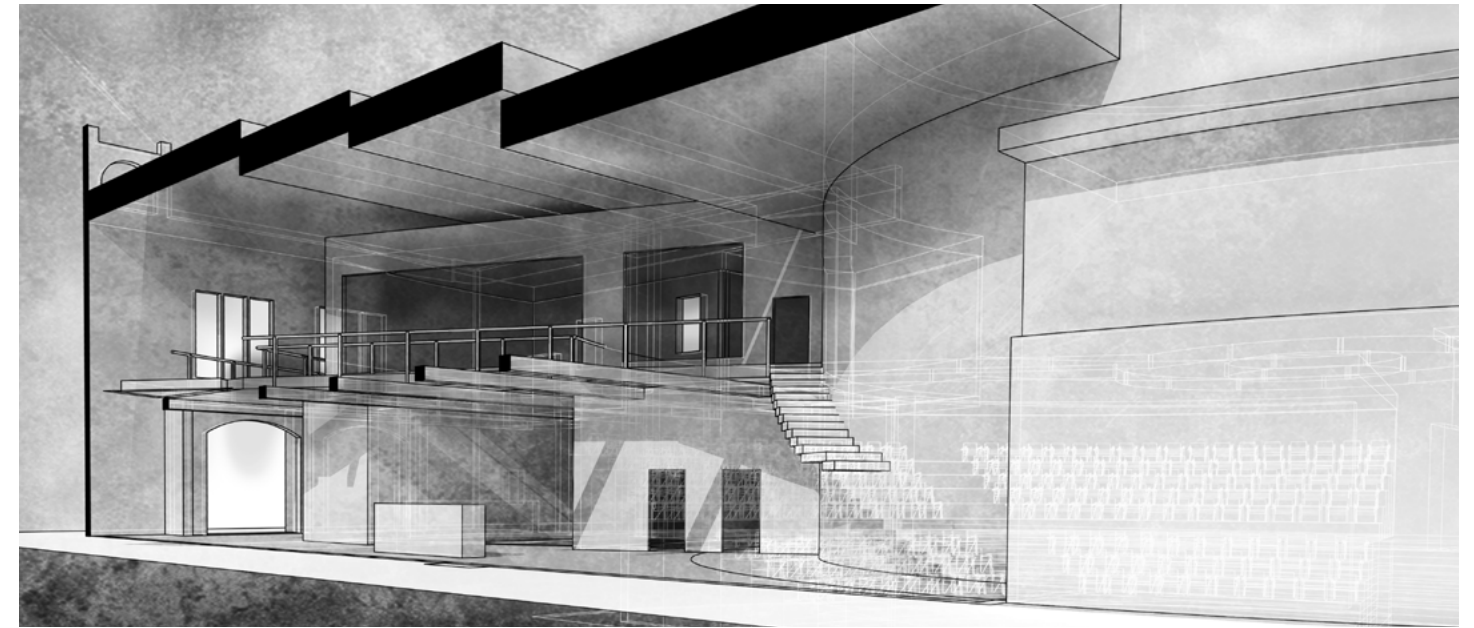
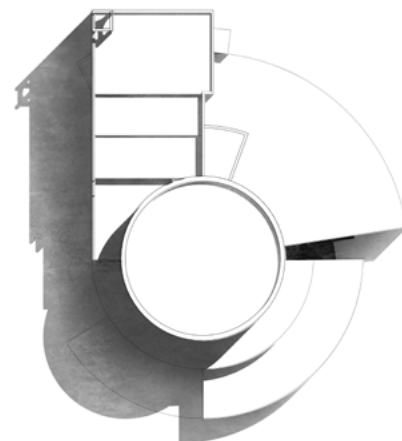
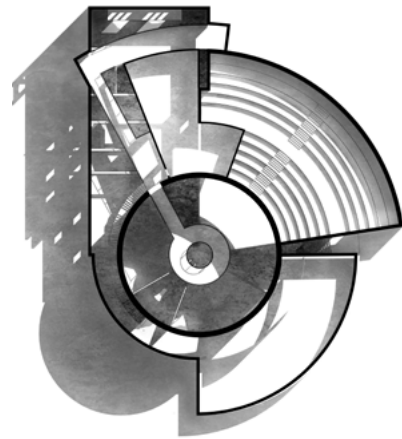
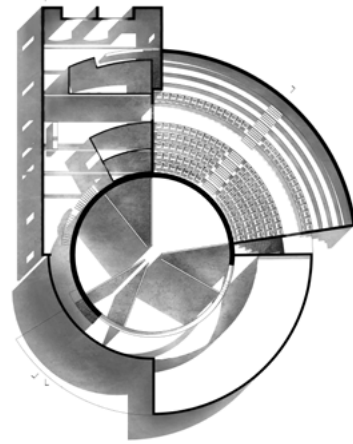
The institution's objective is to create a future in which human lives are enhanced by machines, shaping a leisurely lifestyle focused around creativity and learning, free from the burden of labor. The building is both a maker space for those working on machine technologies, as well as a place for the public to normalize interacting with machines. The residents would design and construct machines on the ground floor, and then be lifted into the different simulation rooms above for public interaction. The building will instill creativity in both the residents and the public by constantly varying the program location vertically, and by changing sectional connections between rooms. This will prepare the human species for a life of active leisure, rather than sedentary entertainment.



04 mixed blood theater

spring year 2 // studio freeby

It is an immense financial risk to foster a small, creative, and experimental atmosphere in the theater industry, as shows need to run for multiple weeks to make the time and effort invested in creating them worthwhile. One way to mitigate this risk is to run multiple plays at once, allowing proven favorites to bolster sales and new experiments to be tested. The proposed renovation of Mixed Blood Theater includes a cylindrical stage and fly space creating a rotating performance area, making room for three sets to be assembled simultaneously. This allows the theater to create the atmosphere of exploration with new, small experiments, while maintaining room for fiscally stable productions. To create a connection between the front and back of house, audience members can wander through rehearsal areas, as well as take a path leading over the stage area, providing a view of all three assembled stages.





Grant J Mattingly

grantjmattingly.com
GrantJMattingly@gmail.com
707 291 0993