

grant mattingly

design portfolio



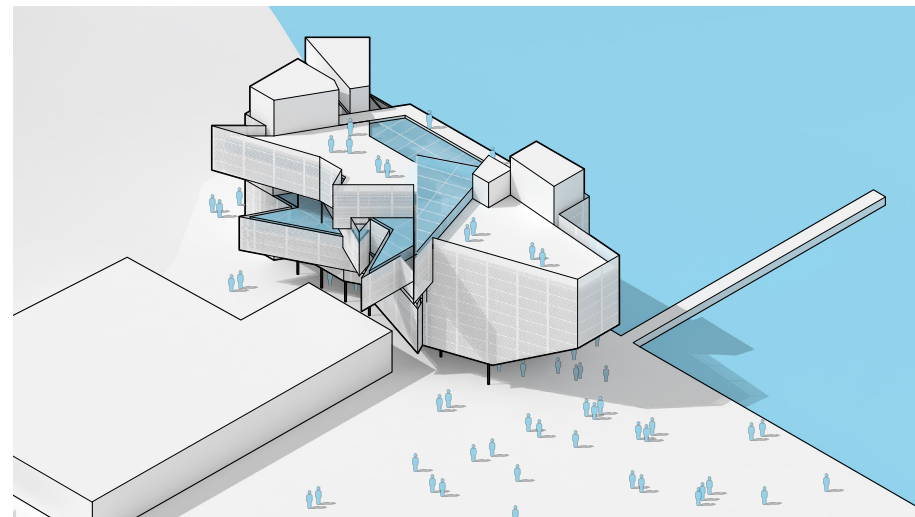


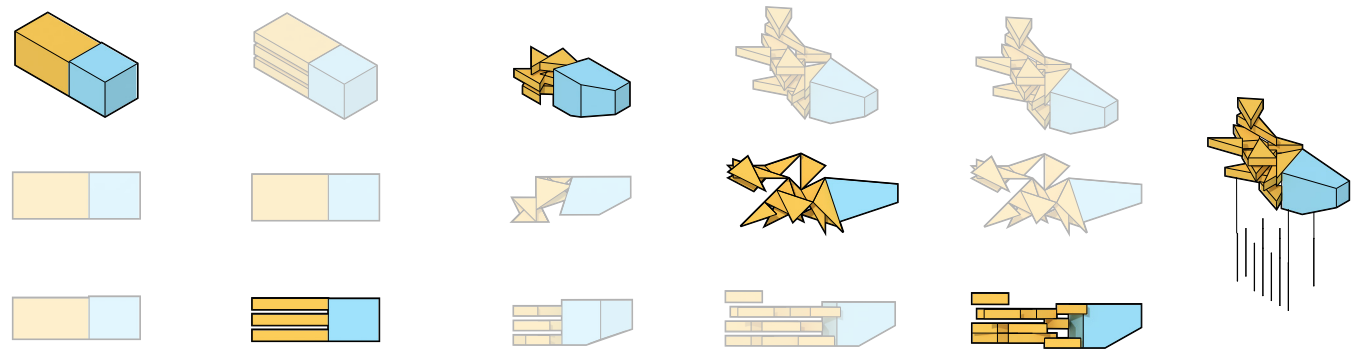
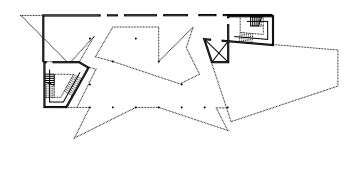
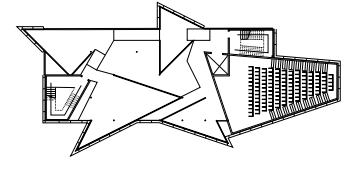
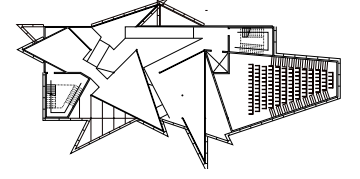
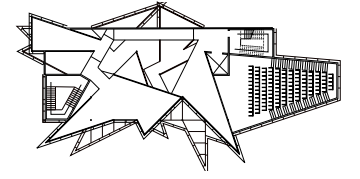
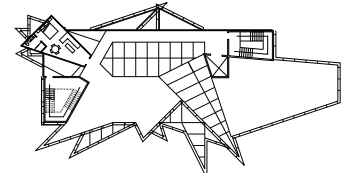
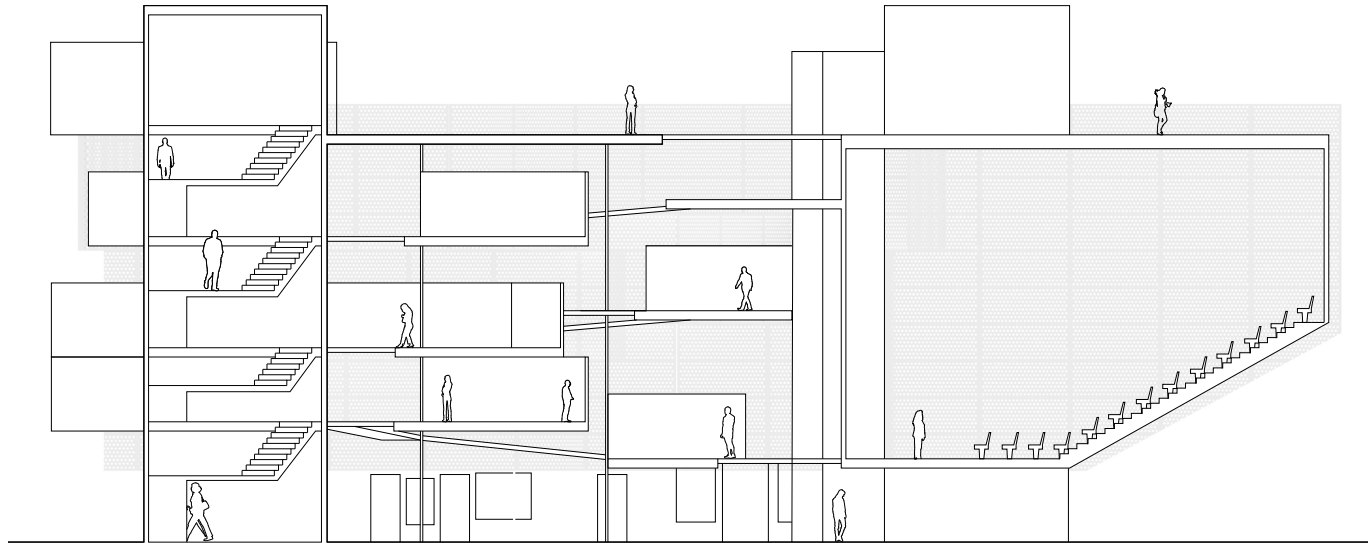
01

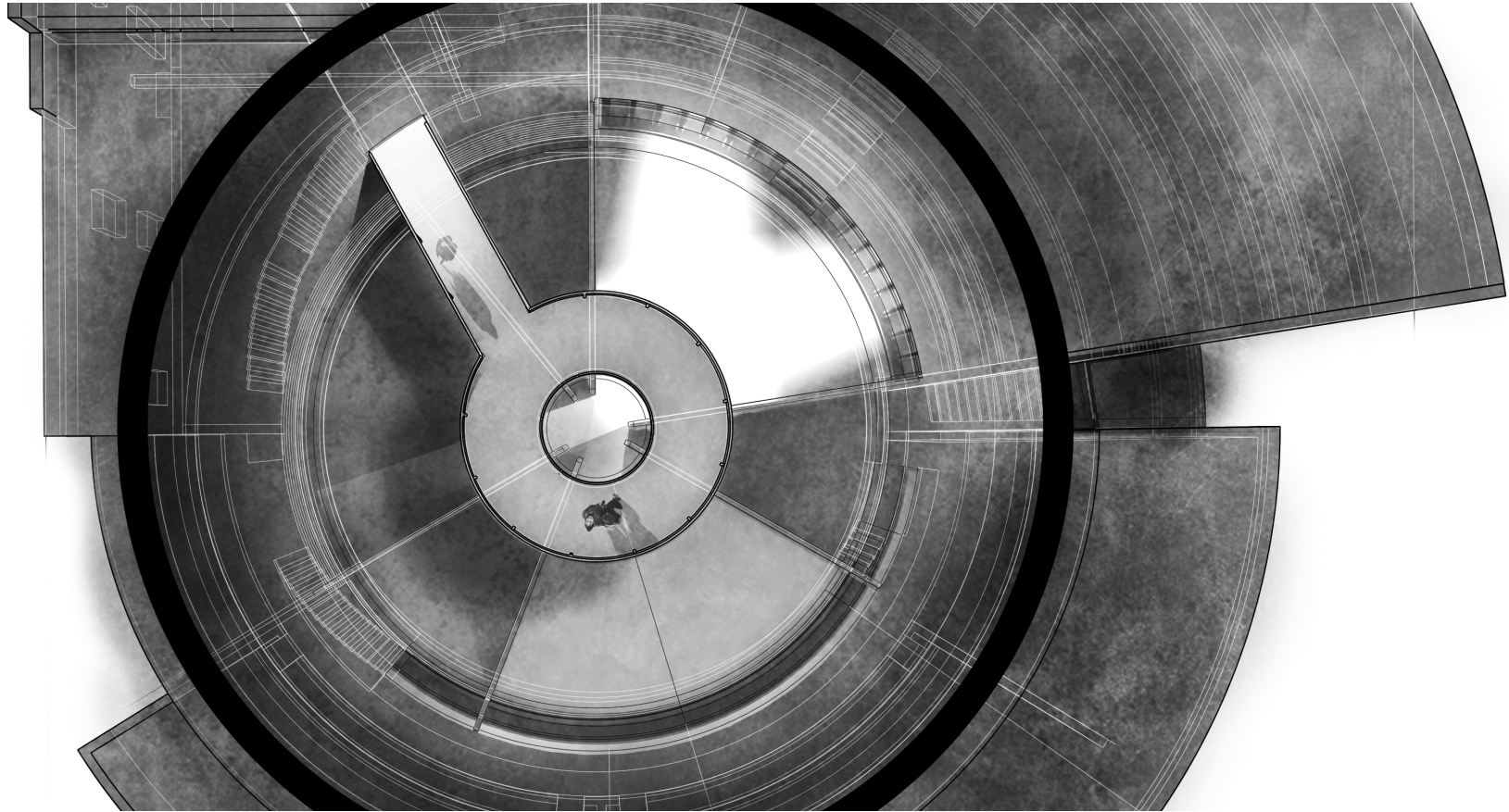
tides through salt marshes

fall year 3 // studio Fowler

A theater and gallery space for the CSU research facility in Tiburon, California, the concept began with examining marshes, an area of research already being conducted on the site. As the tides move sea water into salt marshes, they distribute life into the vertical spaces between blades of sea grass. To replicate this distribution of space, the structural system suspends the theater and gallery spaces between its vertical members. Main circulation paths are oriented to the sea wall, then allows visitors to filter out through the galleries, mimicking the dispersal of water in marshes. These main paths are also ramps, allowing for variation in heights of the open galleries, just as life is unevenly distributed vertically throughout the marsh.



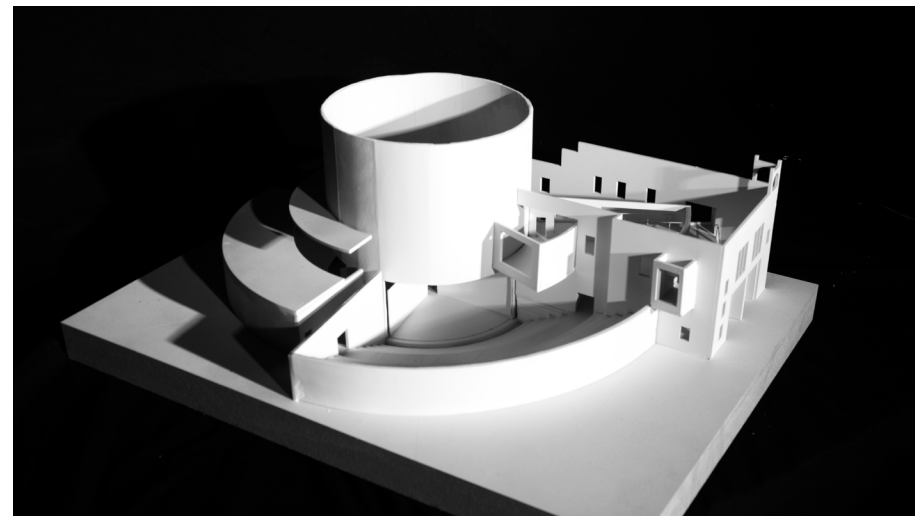


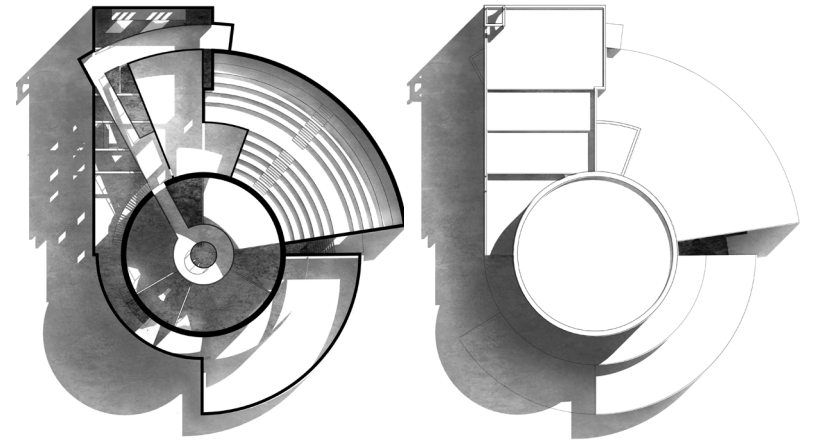
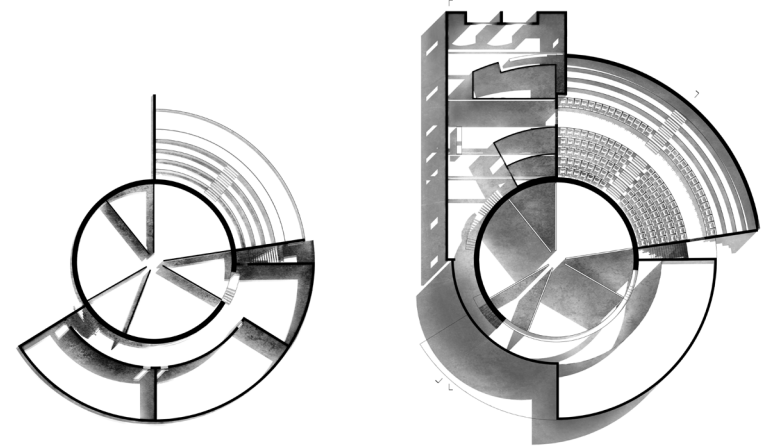
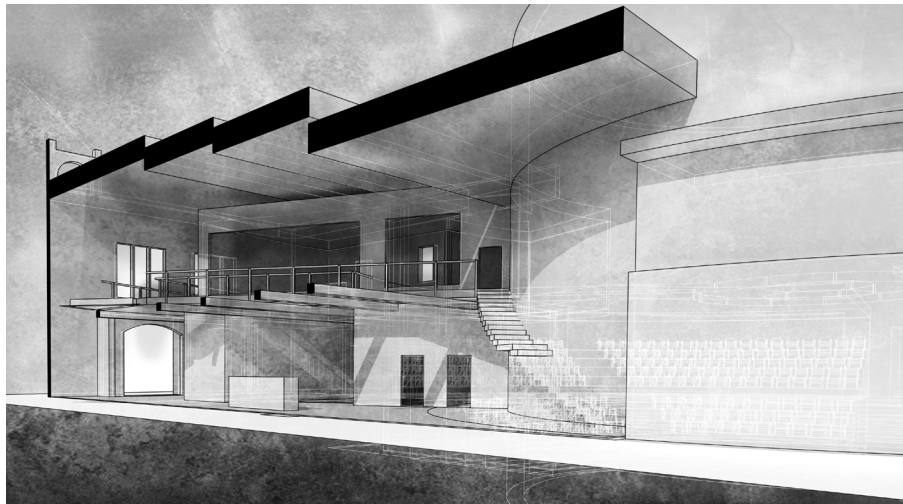


02 mixed blood theater

spring year 2 // studio Freeby

It is an immense financial risk to to foster a small, creative, and experimental atmosphere in the theater industry, as shows need to run for multiple weeks to make the time and effort invested in creating them worthwhile. One way to mitigate this risk is to run multiple plays at once, allowing proven favorites to bolster sales and new experiments to be tested. The proposed renovation of Mixed Blood Theater includes a cylindrical stage and fly space creating a rotating performance area, making room for three sets to be assembled simultaneously. This allows the theater to create the atmosphere of experimentation with new, small experiments, while maintaining room for fiscally stable productions. To create a connection between the front and back of house, audience members can wander through rehearsal areas, as well as take a path leading over the stage area, providing a view of all three assembled stages.







03

interpretive center

fall year 2 // studio McDonald

To understand Montana de Oro State Park, there are three aspects to isolate: vegetation, stone, and water. Visitors enter the center through a path that dives slowly into the cliff, then confronts them with a sweeping view of the site as a whole. The rest of the space is free to explore, presenting guests with these three main aspects in different ways. For example, a large waterfall is placed in a small, confined space to emphasize its power, and a tree native to the site can be viewed at either canopy level or root level to gain a new perspective of the vegetation a visitor might only notice in passing on the site.

